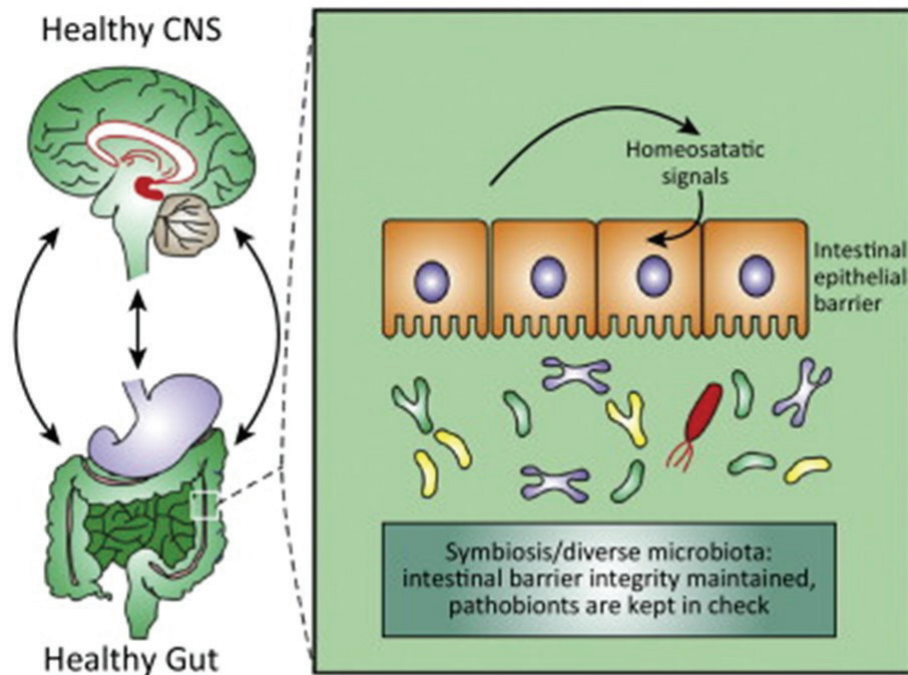


# Gut-Brain Axis

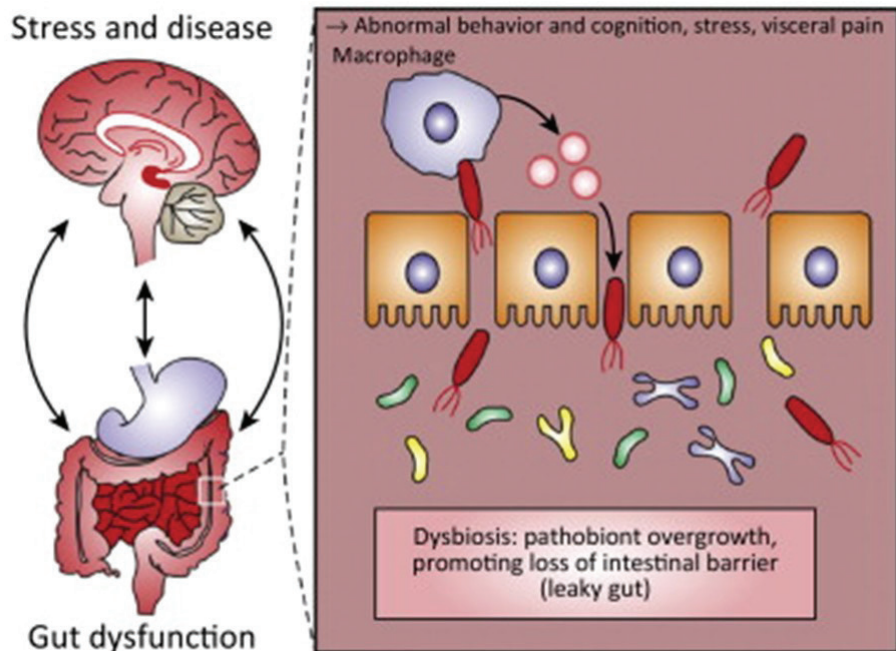
“Perhaps the most exciting of all is the link with mental health. We always thought there was a gut-brain axis but couldn’t quite figure out why. Now the mechanisms are dissected out beautifully and being published in the top journals.”

Editor-in-chief,  
Al Omar  
The Journal, Gut

Jill Margo, Associate Professor, University of NSW. May 20, 2018



Borre, Y. Trends in Molecular Medicine Vol 20 Sept 2014



Borre, Y. Trends in Molecular Medicine Vol 20 Sept 2014